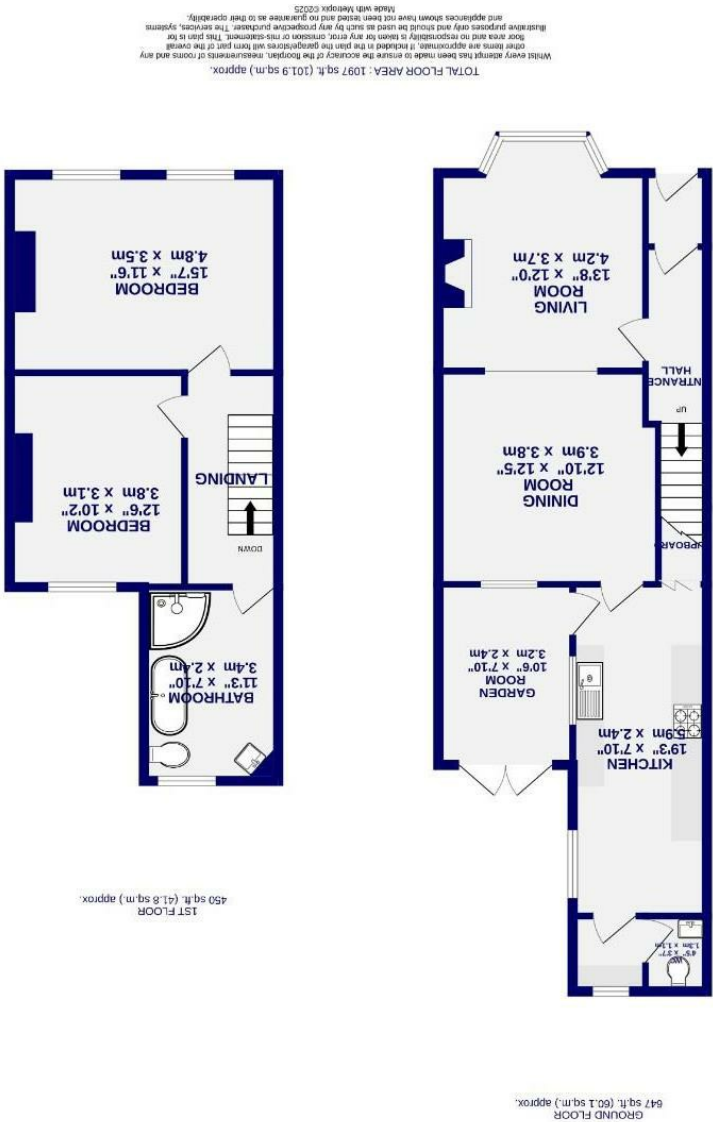


These particulars have been prepared as accurately and as reliably as possible, but should not be relied upon as 'statement of fact'. If there is any point which is of particular importance to you, please contact the office and we would be pleased to check the information. We have not tested any services, appliances, equipment or facilities and nothing in these particulars should be deemed to be a statement that they are in good working order, or that the property is in good structural condition or otherwise. Any areas, measurements, floor plans or distances referred to are given as a guide only and are not precise. Purchasers must satisfy themselves by inspection or by otherwise regarding the items mentioned above and as to the correctness of each of the statements contained in these particulars. No person in the employment of Ashtons has any authority to make or give any representation or warranty whatsoever in relation to this property or these particulars nor enter into any contract relating to the property on behalf of the vendor.

The Village Strensall, York YO32 5XD

Freehold
Council Tax Band - B

- Period Townhouse
- Two Bedrooms
- Spacious Kitchen
- Garden, Courtyard and Parking
- Popular Village Setting
- Well Presented Throughout
- Four Piece Bathroom & Ground Floor W.C
- EPC - C



The Village

Strensall, York

YO32 5XD

Offers Over £350,000

2

1

Tucked away in the sought after village of Strensall, just a short stroll from local shops and amenities, this charming two bedroom period home offers a wonderful blend of character features and modern touches, complete with a private rear garden and off-street parking.

A welcoming hallway leads through to the main living space which has been opened up to create a bright and spacious lounge and dining area. This inviting room is full of character, with original features and a cosy log-burning stove forming a lovely focal point for relaxed evenings at home. To the rear, the kitchen is fitted with a range of modern units and includes integrated appliances along with handy understairs storage. Beyond the kitchen is a utility area with space for laundry appliances, a downstairs WC, and access to a boot room with French doors that open onto a private rear courtyard.

Upstairs, the landing leads to a stylish family bathroom with a four-piece suite, including a freestanding bath and separate shower, along with two double bedrooms. The second bedroom is currently used as a home office but can easily accommodate a double bed, while the main bedroom to the front enjoys generous proportions, twin windows and useful alcove storage.

Externally, the property benefits from an off-street parking space within a carport, which in turn leads through to a delightful private garden with mature borders, a patio area and power supply. There is also on-street parking available to the front.

Beautifully presented and set in a popular location, this lovely home is sure to appeal to a range of buyers and early viewing is highly recommended.

Council Tax Band - B

